

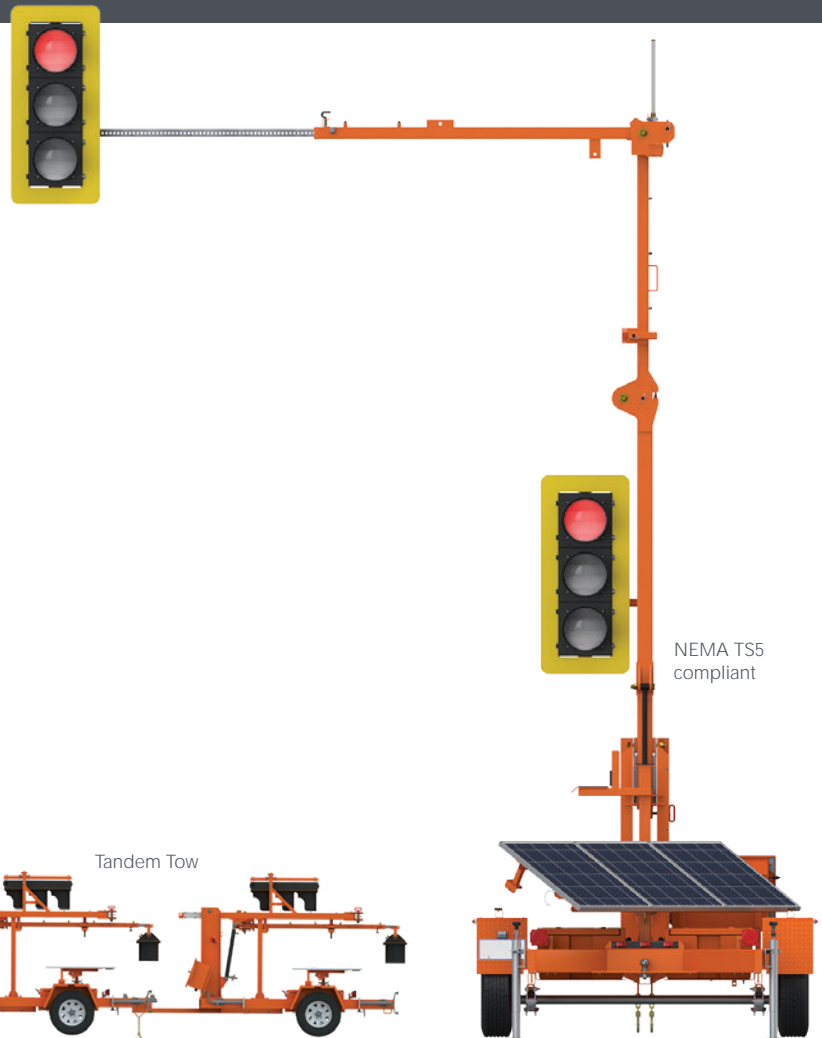


VER-MAC

→ TLD-3612 G3 TRAILER-MOUNTED TRAFFIC SIGNALS

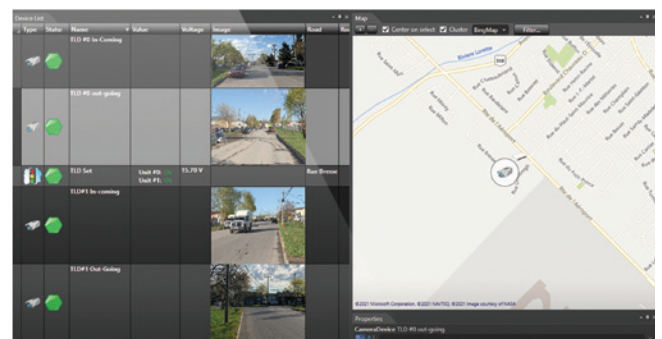
Ver-Mac's TLD-3612 G3 is a battery/solar-powered NEMA TS5 compliant portable traffic signal trailer set. This tandem tow trailer set comes with two traffic signal heads on each trailer.

Its features include the innovative V-Touch TLD Controller, tilt-and-rotate solar panels, hydraulic lift mechanism, advanced radio communication, and our JamLogic software. The TLD-3612 G3 is the most user-friendly traffic control system to set up and program, as well as the most cost-effective in the industry. This trailer-mounted traffic signal provides a safe and efficient traffic control solution for a variety of short and long term applications.



VER-MAC REMOTE CAMERA MONITORING (OPTIONAL)

- Two Axis P1214-E fixed cameras per trailer
- Monitor both incoming and outgoing traffic with two units from each trailer
- Confirm work zone is clear before remotely changing system cycle
- Video storage for incident management



REMOTE SIGNAL PLAN ACTIVATION (OPTIONAL)

- Create signal plan in JamLogic software
- Monitor traffic with remote cameras
- Send and activate signal plan through JamLogic

APPLICATIONS

- Work zone construction
- Bridge construction / repairs
- Special events
- Power outages

FEATURES & BENEFITS

ANY UNIT CAN BE A PRIMARY OR SECONDARY UNIT

No need to move units around

TILT-AND-ROTATE SOLAR PANELS

Maximize solar recharging and increase battery life

JAMLOGIC SOFTWARE

Fleet management with remote monitoring and programming

ADJUSTABLE OVERHEAD MAST

Easy and versatile deployment

HIGHLY VISIBLE 12 IN. (305 MM) LED LAMPS

Meets MUTCD standards

RADIO COMMUNICATION

Secure communication between system units

MALFUNCTION MANAGEMENT SYSTEM

Monitors radio communication, con- ict monitoring, signal malfunction and low voltages

MAXIMUM DISTANCE BETWEEN UNITS

Up to 1 mile (1.6 km) line of sight

ABILITY TO CONTROL MULTIPLE UNITS

Versatile to adapt to different project applications

HYDRAULIC LIFT MECHANISM

Effortless unit deployment

TANDEM TOW

Save time and money by transporting both units with the same truck

ENVIRONMENTALLY FRIENDLY

No generator noise or pollution

ITE LAMPS

Meets MUTCD standards and provides superior performance, reliability and energy ef- ciency

MULTIPLE OPTIONS AVAILABLE

Traf- c detection, emergency preemption and manual- logger to enhance traf- c control management

V-TOUCH TLD CONTROLLER

Each TLD-3612 G3 unit features the industry's easiest and quickest programming thanks to the V-Touch TLD Controller. The controller systematically walks the user through each step to ensure the proper programming, and sequence is created.

- Large 7 in. (178 mm) LCD color graphic touch screen
- Intuitive point-and-go icons
- Real-time signal display
- Easy pattern selection and con- guration
- Traf- c pattern plans easy to create, modify and save
- Schedule plans daily, weekly or monthly
- Instant emergency control (red/red function)
- Ability to send email/SMS alerts when something abnormal occurs (optional)



POWER SUPPLY CONFIGURATION

TILT-AND-ROTATE SOLAR PANELS

Tilts up to 30 degrees and rotates up to 60 degrees to provide maximum charging.

The standard battery/solar con- guration is designed to run 12 months in most regions without manual charging.

WARRANTY

- 1-year warranty on complete trailers
- 2-year warranty on electronic components manufactured by Ver-Mac

DIMENSIONS AND WEIGHTS

- Operating length: 182 in. (4616 mm)
- Operating width: 205 in. (5202 mm)
- Operating height: 265 in. (6718 mm)
- Traveling length: 182 in. (4616 mm)
- Traveling width: 88 in. (2238 mm)
- Traveling height: 98 in. (2477 mm)
- Weight (approx.): 1460 kg (3,219 lb.)
- Axle/suspension: 2495 kg (5,500 lb.)
- Brake actuator: 3402 kg (7,500 lb.)

OPTIONS

- Traf- c detection
- Wireless remote
- Countdown display
- Additional units
- Advanced warning system
- Emergency preemption

CAMERA OPTIONS

- Remote camera monitoring
- Other options are available to meet your needs.

